

LIGHT TANDEM ROLLERS

ARX SERIES



150

Years of
Innovation

Since 1869



AMMANN

TAKE THE EDGE OFF

Some crews look at curbs with dread, but it's business as usual for operators of Ammann light tandem rollers. The manoeuvrability of these compact machines has always been remarkable. Now, the latest generation is even easier to handle, with optimal control and visibility and off-set rollers that help operators hug curbs and work tight against obstructions. Ammann hasn't forgotten what the compaction game is all about: reaching targets in the fewest possible passes. The new light tandem rollers do exactly that, with a vibratory system that packs a powerful punch and makes quick work of the most stubborn materials.



ARX 12 | 16 | 20

Operating weight: 1460–1550 kg (3220–3420 lb)
Maximum weight: 1610–1700 kg (3550–3750 lb)
Drum width: 820–1000 mm (32.3–39.4 in)
Max working offset mode: 50 mm (1.97 in)
Engine: Yanmar – 14.6 kW (19.6 HP)
EU Stage V/U.S. EPA Tier 4f
Yanmar – 15 kW (20.4 HP)
EU Stage V/U.S. EPA Tier 4i



ARX 23-2 | 26-2

Operating weight: 2085–2350 kg (4600–5040 lb)
Maximum weight: 2285–2550 kg (5180–5620 lb)
Drum width: 1000–1200 mm (39.4–47.2 in)
Max working offset mode: 40 mm (1.57 in)
Engine: Kubota – 25 kW (33.5 HP)
EU Stage V/U.S. EPA Tier 4f
Kubota – 24.8 kW (33.3 HP)
EU Stage IIIA/U.S. EPA Tier 4i



ARX 16C | 16K

Operating weight: 1450 kg (3200 lb)
Maximum weight: 1600 kg (3530 lb)
Drum width: 900 mm (35.4 in)
Pneu width: 890 mm (35 in)
Engine: Yanmar – 14.6 kW (19.6 HP)
EU Stage V/U.S. EPA Tier 4f
Yanmar – 15 kW (20.4 HP)
EU Stage V/U.S. EPA Tier 4i



ARX 23-2C | 26-2C

Operating weight: 2230–2515 kg (3220–3420 lb)
Maximum weight: 2425–2285 kg (3550–3750 lb)
Drum width: 1000–1200 mm (39.4–47.2 in)
Pneu width: 961–1167 mm (37.8–45.9 in)
Engine: Kubota – 25 kW (33.5 HP)
EU Stage V/U.S. EPA Tier 4f
Kubota – 24.8 kW (33.3 HP)
EU Stage IIIA/U.S. EPA Tier 4i

COMPACTION FORCES

ARX 12 / 16 / 16C / 16K / 20

Frequency I: 58 Hz (3480 VPn)
Frequency II: 66 Hz (3960 VPn)
Amplitude I: 0.5 mm (0.02 in)
Amplitude II: 0.5 mm (0.02 in)
Centrifugal force I: 19–21 kN (4271.4–4721 lbf)
Centrifugal force II: 22–24 kN (4945.8–5395.4 lbf)

COMPACTION FORCES

ARX 23-2 / 23-2C / 26-2 / 26-2C

Frequency I: 58 Hz (3480 VPn)
Frequency II: 66 Hz (3960 VPn)
Amplitude I: 0.5 mm (0.02 in)
Amplitude II: 0.5 mm (0.02 in)
Centrifugal force I: 33.4–38.8 kN (7508.6–8722.6 lbf)
Centrifugal force II: 39.9–46.5 kN (8969.9–10 453.6 lbf)



ARX 36-2 | 40-2 | 45-2

Operating weight: 3760–4690 kg (8290–10 340 lb)
 Maximum weight: 4050–4980 kg (8930–10 980 lb)
 Drum width: 1300–1380 mm (51.2–54.3 in)
 Max working offset mode: 40 mm (1.57 in)
 Engine: Kubota – 32.8 kW (44 HP)
 EU Stage V / U.S. EPA Tier 4f
 Kubota – 32.8 kW (44 HP)
 EU Stage IIIA / U.S. EPA Tier 4i



ARX 40-2C | 45-2C

Operating weight: 4060–4320 kg (8950–9520 lb)
 Maximum weight: 4360–4620 kg (9610–10 190 lb)
 Drum width: 1300–1380 mm (51.2–54.3 in)
 Pneu width: 1275 mm (50.2 in)
 Engine: Kubota – 32.8 kW (44 HP)
 EU Stage V / U.S. EPA Tier 4f
 Kubota – 32.8 kW (44 HP)
 EU Stage IIIA / U.S. EPA Tier 4i

COMPACTION FORCES

ARX 36-2 / 40-2 / 40-2C / 45-2 / 45-2C

Frequency I: 41 Hz (2460 VPN)
 Frequency II: 55 Hz (3300 VPN)
 Amplitude I: 0.6 mm (0.024 in)
 Amplitude II: 0.4 mm (0.016 in)
 Centrifugal force I: 39.3–45 kN (8835–10 116.4 lbf)
 Centrifugal force II: 50.7–56.4 kN (11 397.8–12 679.2 lbf)
 Centrifugal force III: 51.9–57.6 kN (11 667.6–12 949 lbf)



“These machines thrive on small jobsites and are a perfect fit for rental companies.”



FITS AND STARTS



APPLICATIONS

- Small and medium construction sites
- Playgrounds
- Pathways
- Golf courses
- Road maintenance
- Repair work in city centre
- City roads

PRODUCTIVITY

Electronic drive lever

Advanced drive control enables smooth starts and stops during machine operation.

Articulation joint with oscillation

Great manoeuvrability and constant contact with the surface are key factors in achieving high quality compaction.

Sprinkling system

Multi-level filtration system with large water tank for extended intervals between fillings.

ERGONOMICS

Operator platform design

Spacious operator platform with comfortable driver's seat.

Simple & convenient operation control

Dashboard with clear display and intuitive machine control.

Exceptional operator visibility

Perfect all-around machine visibility to maximise safety on the jobsite.

SERVICEABILITY

Tool-free daily inspection

Quick and easy daily inspection.

Maintenance-free parts

Reduce time required for machine maintenance and prevent damage to components.

Service point locations

Service and regular maintenance points are quickly and easily accessible.

THE TOOLS YOU NEED TO SUCCEED

Ammann Light Articulated Tandem Rollers excels in a wide range of applications. Varied operating weights – from 1,2 tonnes to 4,7 tonnes – ensure the properly sized machine is available to meet the customer's specific needs.

OPERATOR STATION

Rubber-mounted platform limits the vibration that reaches the operator and enables comfort throughout the shift.

ENGINE

Highly efficient engines meet the latest worldwide emissions standards.

SERVICEABILITY

Easy accessibility to daily machine maintenance points from the ground. Engine compartment is accessible from both sides via hood.





ROPS

Foldable rollover protection system reduces machine height and makes transport easier.

TRAVEL LEVER

Utilises buttons to activate vibratory and sprinkling systems. A second travel lever is available as an option.

SPRINKLING SYSTEM

Large water tank extends intervals between fillings.

COMBI VERSION

Vibratory compaction and a kneading effect.

VIBRATORY SYSTEM

Great combination of high performance output and maintenance-free vibratory system make the machine more productive and cost effective.

- ACE^{force} as an option (ARX line 2-2 / 4-2)

ARTICULATION / OSCILLATION JOINT

Maintenance-free joint provides wide turning angles and enables switches between in-line and off-set configurations.

WHEN A JOBSITE THROWS YOU A CURVE

MACHINES EXCEL IN TIGHT AND OPEN SPACES

The rollers excel on both tight jobsites and in open spaces. A combination version, which utilises a drum and tyres, offers even more flexibility.

Electronic drive lever

Enables smooth starts and stops. The control is integrated in the system as an intelligent function. This technical solution prevents unnecessary damage to the freshly placed asphalt and also helps less experienced operators succeed.

Customers can choose from two operating modes:

- Soft drive mode
- Hard drive mode

Articulation joint with oscillation

The central steering joint with integrated oscillation connects key components and ensures balanced machine weight distribution and consistent ground contact.

The ARX 2-2 and 4-2 can be quickly changed between in-line and off-set configurations for increased flexibility. This is a great feature for rental fleets.

Sprinkling system

Exceptional water tank capacities on all lines extends working intervals between fillings. A multi-level filtration system lengthens sprinkler life.

- ARX line 1: 110 liter (29 gal)
- ARX line 2-2: 190 liter (50,2 gal)
- ARX line 4-2: 340 liter (89.8gal)



OFF-SET DRUM

Making the simple adjustment to the off-set mode enables easy operation around curbs and other obstacles.

- ARX line 1 + 50 mm (1.97 in)
- ARX line 2-2 + 40mm (1.6 in)
- ARX line 4-2 + 40mm (1.6 in)

“Ammann rollers provide industry-leading compaction performance, in part due to the vibratory systems.”

APPLICATION

The front drum of an Ammann Light Tandem Roller can be off-set to enable work against curbs and other obstructions. The machine can easily return to in-line settings when on more open jobsites.

COMBI VERSION

Combination rollers are unique machines that utilise both a drum and pneumatic tyres, enabling vibratory compaction or a kneading effect. Two independent water sprinkling systems allow the use of different liquids.

ACE^{force}



- Covers the spectrum of compaction in soil and aggregates
- Available information includes achieved compaction
- Continuous compaction measurement system
- System is integrated in multifunctional display
- Can measure compaction at any point on-site
- Absolute measurement system with evaluation of real material stiffness

VIBRATORY SYSTEM

Wide range of compaction outputs, from 19 kN up to 46,5 kN – depending on machine size class.



WEARING COURSE

BINDER LAYER

ASPHALT BASE LAYER

GRAVEL AND WET MIX LAYERS

READY TO ROLL

GET TO WORK UPON ARRIVAL

A comfortable operator station includes an intuitive, easy-to-access dashboard that enables effortless operation. Optimal visibility is appreciated during machine operation – and while loading the rollers for transport to the next jobsite.

Exceptional operator visibility

The narrow frame maximises sight lines around the entire machine, including the edges, for optimal visibility during operation and loading.

Operator platform design

The operator station is designed for comfort no matter how long the shift, with an ergonomic seat and vibration-isolated platform. The station's location on the rear frame provides exceptional visibility, as does the sliding, easy-to-adjust seat.

Simple and convenient operation control

A logically arranged, intuitive dashboard helps operators of all experience levels efficiently control the machine. An ergonomic travel lever includes buttons that activate the vibratory and sprinkling systems. Key machine data is displayed in a central location, making it easy for operators to monitor the most important indicators such as fluid levels or status of engine after-treatment.



SAFETY FIRST

- Robust anti-vandal cover
- Hand rail around dashboard
- Metal side walls on platform
- Seat belt
- Well-positioned, secure transporation points

“Ammann rollers bring excellent visibility and intuitive machine control.”



INTUITIVE DASHBOARD

- Clear and logical layout
- Reliable, intuitive switches
- Integrated multifunctional display



EVERY MINUTE MATTERS

EASY ACCESS ADDS A PRODUCTIVITY BOOST

Productivity comes in many forms with Ammann Light Tandem Rollers. That includes the reduced time your crew and technicians spend on maintenance and service.

Tool-free daily inspection

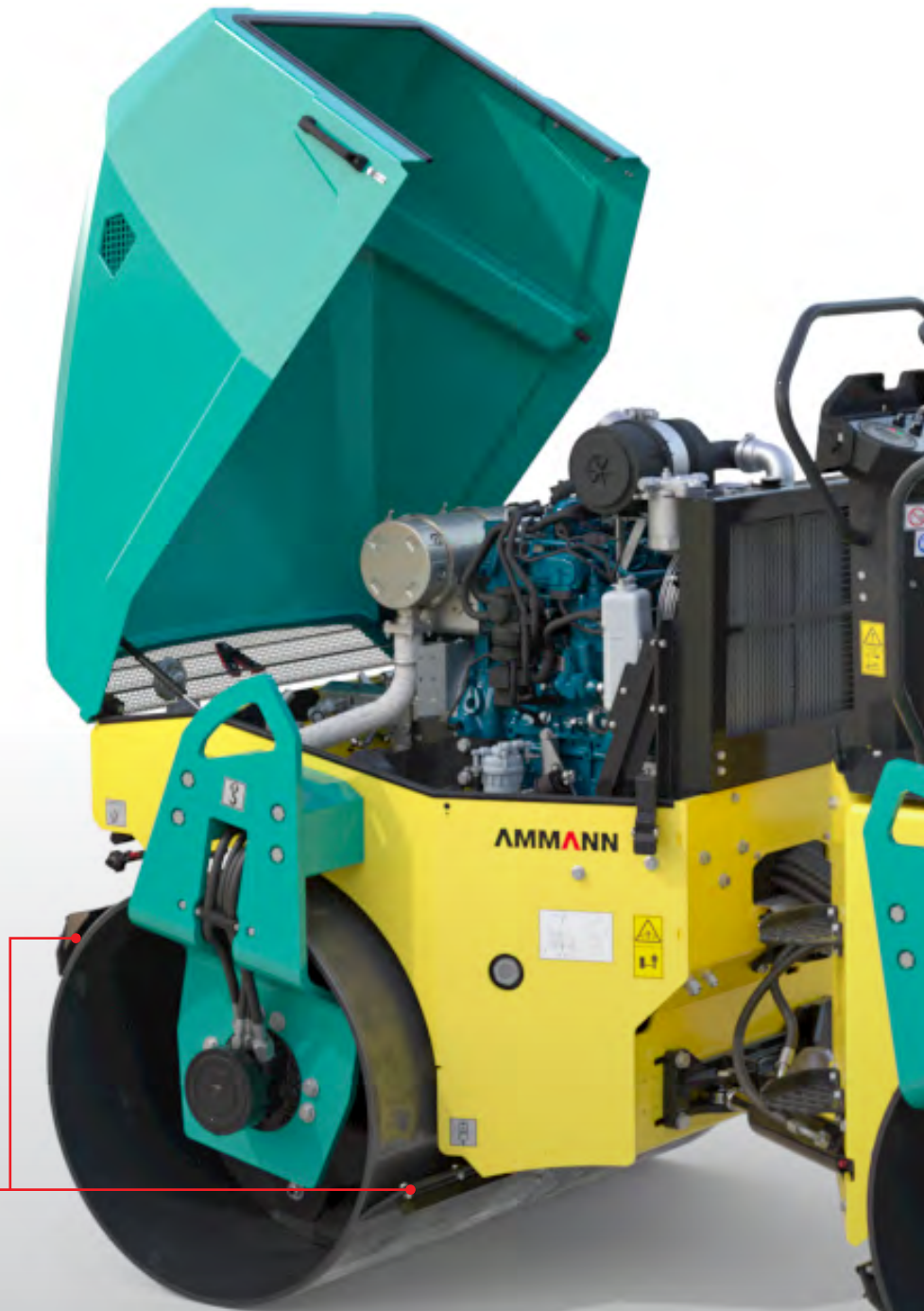
A wide-opening hood provides excellent access to the engine compartment and daily inspection points while also offering a quick overview of fluid levels. No tools are required to access daily service points, ensuring the maintenance is completed quickly – thereby reducing ownership costs.

Maintenance-free parts

Heavy-duty components extend machine life and minimise the need for replacement parts. Many parts and components, including the articulation joint and vibratory system, are maintenance free. This greatly reduces ownership costs by eliminating the need for replacement parts and saving time spent on machine maintenance.

Service point locations

Access is maximised through a wide-opening hood and an optimised machine design that places key components below the engine compartment – an easy-to-reach location. Routine maintenance is more efficient and convenient, thanks to accessible draining points and testing ports on hydraulic components.



DRUM SCRAPERS

Two scrapers per drum is standard.

RUBBER BUFFER

Provides additional protection during transport.



ARX 1 SERIES

SUCCESS IN TIGHT SPACES

The smallest line of articulated tandem rollers provides exceptional compaction output and manoeuvrability. This class of machines is ideally suited to small asphalt jobsites or repair works in city centres.

The production line consists of the following models:

ARX 12 / ARX 16 / ARX 16C / ARX 20

The rollers are exceptionally manoeuvrable because of their size and tight turning radius. They also can work flush against obstructions thanks to a uniquely designed frame that does not extend beyond the width of the drum. This side-free approach eliminates the need for supplementary compaction and improves operator visibility – essential when working in tight spaces.

Varied force and frequency options ensure the machine can properly match the needs on the jobsite.

- Yanmar, EU Stage V / U.S. EPA Tier 4f
- Yanmar, EU Stage V / U.S. EPA Tier 4i

DRUM WIDTH		PNEU WIDTH	
ARX 12	ARX 16	ARX 20	ARX 16C
820 mm (32.3 in)	900 mm (35.4 in)	1000 mm (39.4 in)	890 mm (35 in)



HIGHLIGHTS

- Full-flush drum version enables edgework
- Electronic drive lever with integrated intelligent and safety functions
- Maintenance free articulation joint and vibratory system
- Mechanical rpm adjustment
- Two centrifugal forces and frequencies
- One amplitude
- Two scrapers per drum
- Suspended platform
- Anti-vandal protection cover
- Excellent visibility from operator seat
- Central machine lifting point





ARX 2-2 SERIES

WORKING AROUND OBSTRUCTIONS

Ammann Light Tandem Rollers utilises a new articulation joint that enables quick drum adjustment from in-line to off-set configurations, which is helpful when working close to obstructions. When the machine is off-set, operators need watch only one drum, knowing the second will be a safe distance from the obstacle. The in-line drum setting is available when it's time for productivity in open spaces. All these features make the machines great fits for rental companies.

The production line consists of the following models:
ARX 23-2 / ARX 23-2C / ARX 26-2 / ARX 26-2C

A redesigned operator station includes a reliable dashboard with intuitive machine control.

The operator's seat provides exceptional views to all machine corners. The innovative multifunctional machine display, standard on all Ammann Light Tandem Rollers, gives the operator a complete overview of all essential information – including operational parameters, fluid levels, temperatures and oil pressure.

- Kubota, EU Stage V / U.S. EPA Tier 4f
- Kubota, EU Stage IIIA / U.S. EPA Tier 4i

DRUM WIDTH		PNEU WIDTH	
ARX 23-2	ARX 26-2	ARX 23-2C	ARX 26-2C
1000 mm (39.4 in)	1200 mm (47.2 in)	961 mm (37.8 in)	1167 mm (45.9 in)



HIGHLIGHTS

- Machines operate with drum in-line or off-set
- DOC and DPF technology for lowest engine emissions (Stage V version)
- Electronic drive lever with integrated intelligent and safety functions
- Two scrapers per drum
- Maintenance free articulation joint and vibratory system
- Two centrifugal forces and frequencies
- One amplitude
- Suspended platform
- Anti-vandal dashboard protection cover
- Excellent visibility from operator seat
- Adjustable and slideable seat
- ACE^{force} Intelligent Compaction system available as an option





ARX 4-2 SERIES

VARIED COMPACTION OUTPUT

Sometimes a heavier version of a light compactor is needed. These machines can be used on a wide range of jobsites, where compaction output and easy machine transport are required.

The ARX line 4 meets all jobsite and transport challenges.

The compactors utilise the unique features that are common across the Ammann Light Articulated Tandem Roller product line.

The production line consists of the following models:

ARX 36-2 / ARX 40-2 / ARX 40-2C / ARX 45-2 / ARX 45-2C

Are more varied vibratory settings needed? If so, these compactors are the answer. They utilise an advanced two-stage vibratory system that enables changes in the rotational direction. This is combined with three different vibratory frequency settings, helping the machines provide whatever compaction output is needed and making them versatile and effective compaction tools.

- Kubota, EU Stage V / U.S. EPA Tier 4f
- Kubota, EU Stage IIIA / U.S. EPA Tier 4i

DRUM WIDTH		
ARX 36-2	ARX 40-2	ARX 45-2
1300 mm (51.2 in)	1300 mm (51.2 in)	1380 mm (54.3 in)

PNEU WIDTH	
ARX 40-2C	ARX 45-2C
1275 mm (50.2 in)	1275 mm (50.2 in)



HIGHLIGHTS

- Weight class matches a wide range of jobsites
- Machines operate with drum in-line or off-set
- DOC and DPF technology for lowest engine emissions (Stage V version)
- Electronic drive lever with integrated intelligent and safety functions
- Two scrapers per drum
- Maintenance free articulation joint and vibratory system
- Two-stage vibratory system
- Three different compaction output settings
- Suspended platform
- Anti-vandal dashboard protection cover
- Excellent visibility from operator seat
- Adjustable and slideable seat
- ACE^{force} Intelligent Compaction system available as an option



OPTIONS

MACHINE CUSTOMISATION

	ARX 1 *	ARX 2-2 **	ARX 4-2 **
HARD DRIVE CONTROL LEVER MODE	x	x	x
CE LABEL (obligatory for CE)	x	x	x
ROPS FOLDABLE (obligatory for CE)	x	x	x
COMBI VERSION	x	x	x
ROAD LIGHTS (2 x lights front + 1 x rear) (obligatory for CE)	x	x	x
ROAD LIGHTS (2 x lights front + 1 x rear) incl. Indicators	x	x	x
360° LED WORKING LIGHTS ON ROPS (w/o Beacon)	x	x	x
360° LED WORKING LIGHTS ON ROPS (incl. beacon)	x	x	x
ROTATING LED WARNING BEACON	x	x	x
ROTATING LED WARNING BEACON (permanent)	x	x	x
ROTATING LED WARNING BEACON (for canopy)	x	x	x
BACK-UP ALARM	x	x	x
ILLUMINATED LICENSE PLATE HOLDER (rear)	x	x	x
CENTRAL LIFTING POINT	Standard	x	N / A
3'' SEAT BELT	x	x	x
2 nd DRIVE-LEVER ON LEFT SIDE	x	x	x
ARM RESTS FOR OPERATOR'S SEAT	x	x	x
LOCK FOR WATER TANK CAP	x	x	x
INFRARED THERMOMETER	N / A	x	x
ACE ^{force} (kB Value in display, no memory)	N / A	x	x
ACE ^{force} (kB Value in display, no memory (C-Version))	N / A	x	x
ATC AMMANN TRACTION CONTROL	Standard	x	x
EDGE-CUTTER 45°, mounted front-left side	x	N / A	N / A
EDGE-CUTTER 45°, mounted front-right side	N / A	x	x
SCRAPER TILTABLE - two drums	N / A	x	x
SCRAPER TILTABLE - one drum (C-Version)	N / A	x	x
DRUMS IN LINE (C-Version not possible)	x	x	x
BIODEGRADABLE HYDRAULIC	x	x	x
SERVICE-KIT 500 H	x	x	x
SERVICE-KIT 2000 H	x	x	x
REVERSING MIRROR	x	x	x
CANVAS CANOPY ON ROPS	x	x	x
SEAT-HEATING	x	x	x
SPECIAL COLOUR RAL	x	x	x
SET OF TOOLS	x	x	x
SET OF DOCUMENTATION - printed copy	x	x	x
CERTIFICATE OF ORIGIN	x	x	x
OVERSEAS SHIPPING PREPARATION (incl. machine preservation, container packing)	x	x	x

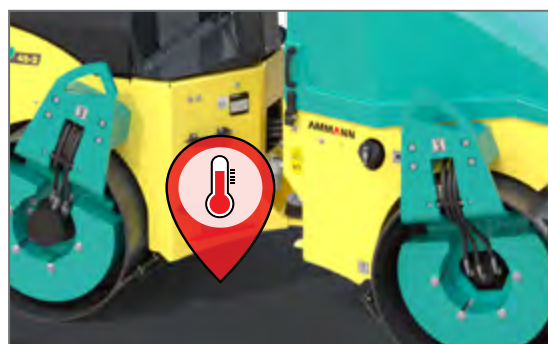
* Available for models meets (EU Stage V / U.S. EPA Tier IV Final)

** Available for models meets (EU Stage IIIA / U.S. EPA Tier IV Interim & EU Stage V / U.S. EPA Tier IV Final)



ACE^{force}

This continuous compaction measurement system evaluates real material stiffness – essential information that helps eliminate passes and improve productivity.



THERMOMETER

Ammann's infrared thermometer provides constant temperature readouts to help guide operators – a feature that is particularly essential to those with less experience.



EDGE CUTTER

This is the perfect tool for finishing edges on asphalt layers. Two options – a cutting disc and a compacting disc – are available.

SERVICE

A NETWORK TO SUPPORT YOU

No matter where you are, Ammann-trained technicians and parts are nearby. Ammann dealers provide well-trained service technicians who can help you, whether it's an emergency or time for preventive maintenance. The vast Ammann network ensures there is a nearby technician who understands your language and your technical needs. Parts availability and ease of ordering are always Ammann priorities.

HOTLINE SUPPORT

Ammann experts are ready to answer your technical questions 24 hours a day, seven days a week. The hotline team is highly trained and experienced. Representatives can talk you through the challenges – in various languages – to help keep your machine productive.

SERVICE APP

The service app for Ammann machines impresses machine operators who are already benefiting from the advantages of the free application. The easy-to-use app provides machine operators working on site quick and uncomplicated access to machine documentation.

SERVICE VIDEOS

Sometimes a video tells the story best. That's why you'll find a variety of service videos that walk you through service and maintenance processes.

QR CODE

Many maintenance kits feature QR codes that link to videos with helpful demonstrations that walk you or your technician through the process. The videos tell the story without dialogue so customers anywhere in the world can understand.



AMMANN SERVICELINK



SERVICELINK

THE DIGITAL FLEET MANAGEMENT SOLUTION



Manage your equipment – anytime, anywhere – with Ammann ServiceLink. This comprehensive fleet system provides key data for light compaction equipment, heavy compaction machines and asphalt pavers. You can choose which machines to track.



- Ammann ServiceLink utilises telematics that give you the locations of the machines, hours of usage and other essential information. You'll have access to data that will keep your machines running – and make them more productive, too.
- Ammann ServiceLink makes it easy to plan and schedule the maintenance that protects your fleet.

HIGHLIGHTS

- Easy to manage
- Light equipment does not require a machine battery
- Great for rental fleets
- GPS tracking for location, efficiency and productivity information for a jobsite
- Full machine telematics to assess machine usage, fuel burn and idle time
- Machine documentation to help analyse and improve processes
- Easy management of service intervals and maintenance planning



TRAINING

ENHANCE YOUR PERFORMANCE

If Ammann machine training was summarised in a single word, it might well be “comprehensive.” The training includes multiple expertise levels and modules to benefit all skill levels.

TRAINING WORLDWIDE

Ammann product and application experts are ready to provide the training you need, no matter where you are. The global nature of Ammann ensures an expert is always near you – ready to offer instruction that ranges from the basics to the specifics relevant to your geographic area. The training can take place at an Ammann facility, your business – or even on a jobsite.

KEY TEACHING THEMES CONNECT ALL EFFORTS, NO MATTER WHERE THEY OCCUR

A good balance. Training often combines a traditional classroom setting with hands-on machine experience. Ammann application experts also can offer instruction on your jobsite.

Training typically includes students from other industry businesses. Participants say conversations with their peers – and learning how they overcome challenges – are other key benefits.

Learn in your language. Lessons are taught in many languages, ensuring your team understands key terms and lessons and makes the most of your training investment.



SPARE PARTS

You can only earn money when your equipment is working. That's why Ammann does everything possible to ensure you have the parts where and when you need them. Those efforts include easy online ordering to avoid confusion and enable tracking, and efficient logistics and availability to help parts reach you quickly.

WEARING KITS

Some machines handle abrasive materials in demanding applications. While wear is inevitable, downtime can be limited. Wearing kits make replacement of these parts efficient and cost-effective. All the necessary parts – big and small – are in a single box to keep you organised and efficient and to ensure the machines are quickly back up and running.

EMERGENCY KITS

Emergency kits prevent little frustrations from becoming bigger issues that can shut down a machine and even a jobsite. These kits include parts such as switches, fuses and valve coils that are simple and fast to change yet still can cause significant problems if not operating properly. The kits easily fit in the trunk or bed of a vehicle so they're on hand when needed. A crew-member with a bit of technical knowledge can handle this work on the jobsite. These repairs take 2 hours or less.



MAINTENANCE KITS

Preventive maintenance is crucial to efficient operation and service life of machines. The easier the maintenance, the more likely it is to be completed. Maintenance kits make the upkeep simple. Parts associated with a particular maintenance process are in a single box with a single part number.

BROCHURE WITH ALL KITS

We have a prospect with all kits, and their part numbers are available for you. Just contact your parts consultant and have a digital or hardcopy sent to you.



For additional product information
and services please visit:
www.ammann.com

