

**Engine**

Cummins QSB6.7

**Net Power**

215 Hp (160 kW)

**Operating Weight**

17,800 kg

**Bucket Capacity**

2.6 – 5.6 m<sup>3</sup>

**856H**  
WHEEL LOADER



**TOUGH WORLD. TOUGH EQUIPMENT.**

# A POWERFUL VISION

Today, LiuGong is a leader in China's construction equipment industry and is one of the fastest growing construction equipment companies in the world, providing customers with quality, reliable support across a wide range of equipment.



## WHAT MAKES LIUGONG A LEADER?

LiuGong built China's first modern wheel loader and continues to embrace its commitment to innovation by combining decades of know-how with leading technology from the world's best component suppliers.

LiuGong has established centers of excellence around the globe to guarantee service and support and ensure their customers can work efficiently and

productively. LiuGong manufacture at 24 plants and have offices across all major regions of the world including Europe, North America, South America, Asia-Pacific, India, the Middle-East, South Africa and Russia.

An extensive network of regional parts depots operate around the globe to ensure customers receive the support they have come to expect from LiuGong.

Innovation and manufacturing excellence for almost 60 years

## INNOVATIVE FROM THE START

Innovation drives industries forward and LiuGong has been **driving innovation for nearly 60 years.**

An 110,000m<sup>2</sup> Global Research & Development Centre in Liuzhou, China is equipped with world-class technology and run by industry experts including around 1,000 R&D engineers.

In addition to the Liuzhou facility LiuGong operates world-class R&D facilities in Poland, India, the United States and the United Kingdom, supporting their global vision of excellence.

Emphasis on quality is reflected in LiuGong's Six Sigma quality methodology and compliance with ISO 9000 standards.

LiuGong has established joint venture partnerships with some of the industry's best known names including:

- German drivetrain components manufacturer **ZF Friedrichshafen AG**
- Finnish mining and aggregates processing equipment manufacturer **Metso**
- North American diesel engine manufacturer **Cummins**

# WE ARE LIUGONG



**10,000+**  
Employees



**24**  
Factories



**10**  
Global offices



**2,650+**  
Sales outlets



**1,000+**  
R&D engineers



**5**  
R&D facilities



**8**  
Regional  
parts depots



**Nearly 60**  
Years' experience



# DESIGNED TO GET MORE DONE

The new 856H is a **highly productive** partner on the jobsite. It boasts a redesigned Z-bar and bucket, an advanced load-sensing hydraulic system and a **responsive** powershift transmission that ensures fast cycle times.

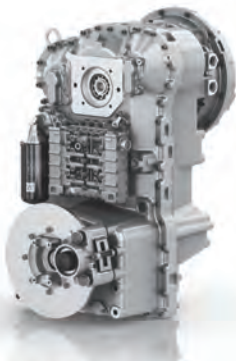
## DEPENDABLE POWER

The 856H benefits from the unmatched performance of the 215 Hp (160 kW) Cummins QSB6.7 Tier 4 Final engine that not only maximizes torque output delivering more power at lower engine speeds, it also delivers fast throttle response.

## TRANSMISSION

The 856H offers a choice of two smooth-shifting ZF powershift transmissions: 4F/3R and the all new 5F/3R combination. The five-speed version comes standard with a lock up clutch torque converter that allows for maximum transfer of power to the transmission while maintaining excellent fuel efficiency. Optimized gear ratios and auto-shift functionality provide faster acceleration and responsive cycle times, regardless of the application.

Conveniently located controls provide full command of loader and transmission functions for optimum work efficiency. Kick-down and forward/reverse buttons are conveniently located on the loader joystick. The kick-down function enables the operator to lower the gear with the tip of a finger, increasing engine torque and delivering increased bucket breakout force and improved loading capability.



## LOAD-SENSING HYDRAULICS

Where intelligence meets brute force. The load-sensing hydraulic system directs power to the bucket or steering function according to demand, thus ensuring fast response and excellent efficiency. Smooth and superior control of the machine, boom and the attachment is easily achieved. The operator is in full control as power is efficiently distributed to meet the requirements of the job at hand.

## RIDE CONTROL

LiuGong's new generation ride control, coupled with an automated bucket positioning feature, absorbs shocks and improves ride quality over any terrain. The improved ride ensures material is retained in the bucket and helps improve all round operator comfort, confidence and productivity.

## Z-BAR LINKAGE TO SUPPORT PAYLOAD PERFORMANCE

The optimized Z-Bar geometry positions the bucket closer to the tires, achieving superior digging force, high bucket breakout force and maximum angle rollback for stable transport of materials with minimal spillage.

The option of a hydraulic quick coupler attachment adds to the versatility of this machine, allowing for the use of multiple tools and attachments to suit the job at hand.

## AXLES

The 856H features limited-slip differential axles that automatically deliver power to the wheels, creating excellent traction and virtually eliminating slippage even when operating in soft or uneven ground conditions.

These axles are designed to ensure all four wheels remain on the ground even in rough terrain. The front axle is rigidly-mounted to the frame to support the entire weight of the wheel loader and the rear axle is designed to allow for  $\pm 12^\circ$  oscillation, delivering greatly enhanced stability and traction.

## NEW BUCKET DESIGN FOR BETTER PAYLOAD CONTROL

The bucket on the newly designed 856H wheel loader has increased capacity and material holding ability. The 856H loads more easily and carries a larger payload, ensuring every cycle is your most productive.

## OPERATOR FRIENDLY ENVIRONMENT

A comfortable operator is a more productive operator. The ergonomically designed controls, increased visibility and many convenience features in the cab of the 856H ensure long comfortable and productive days on the jobsite.











# ENGINEERED FOR EFFICIENCY

The new 856H wheel loader not only works **harder** it works **smarter**. With integrated advanced technologies and rugged design, the 856H strikes the perfect balance between **fuel efficiency** and worksite productivity.

## FUEL WISE 6 CYLINDER ENGINE

The six cylinder, four stroke Cummins QSB6.7 turbocharged and inter-cooled engine achieves Tier 4F/Stage IV emission regulations without compromising on power and strength. From air intake to exhaust after treatment using optimized NOx and Dual Reduction Technology (EGR+SCR) this engine delivers for the environment and your business bottom line.

## AUTO-IDLE SPEED FUNCTION

Optimizing and controlling engine speed is the key to reducing fuel consumption. The Auto-Idle Speed function on the new 856H allows optimal engine speed control to ensure the appropriate RPM is achieved for the job. If no activity is detected in three seconds, engine speed will automatically reduce to idle speed. When the system detects commanded work, the engine will immediately return to the previous throttle setting speed.

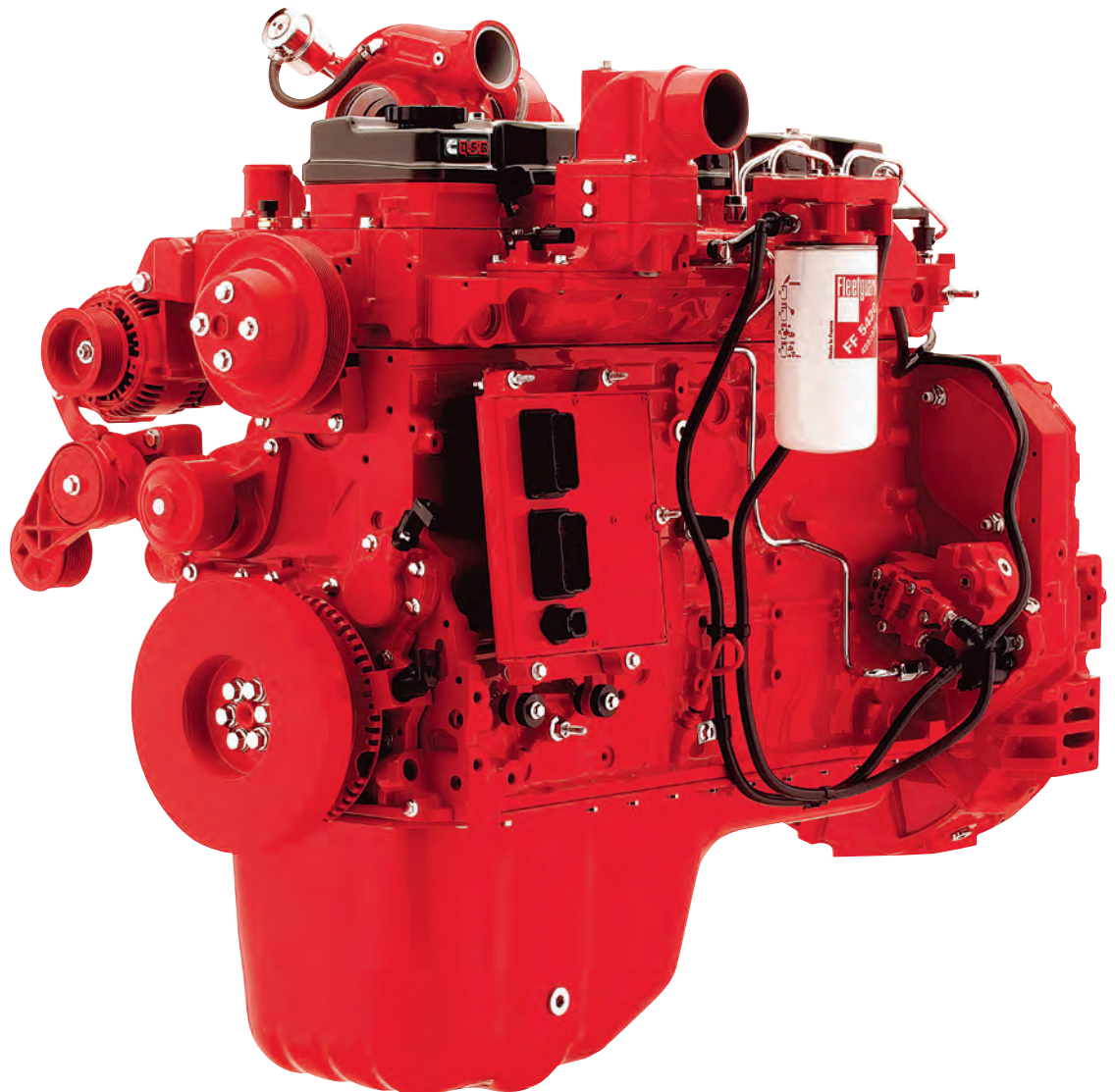
## KEEP IT COOL

The cooling system has been totally redesigned providing better cooling and reduced noise. The new 6mm hexagon grill design improves ventilation and a reversible hydraulic fan enables periodic radiator clean-out reducing the power required to operate the cooling system fan.

## LOAD SENSING HYDRAULIC SYSTEM FOR OPTIMAL CONTROL

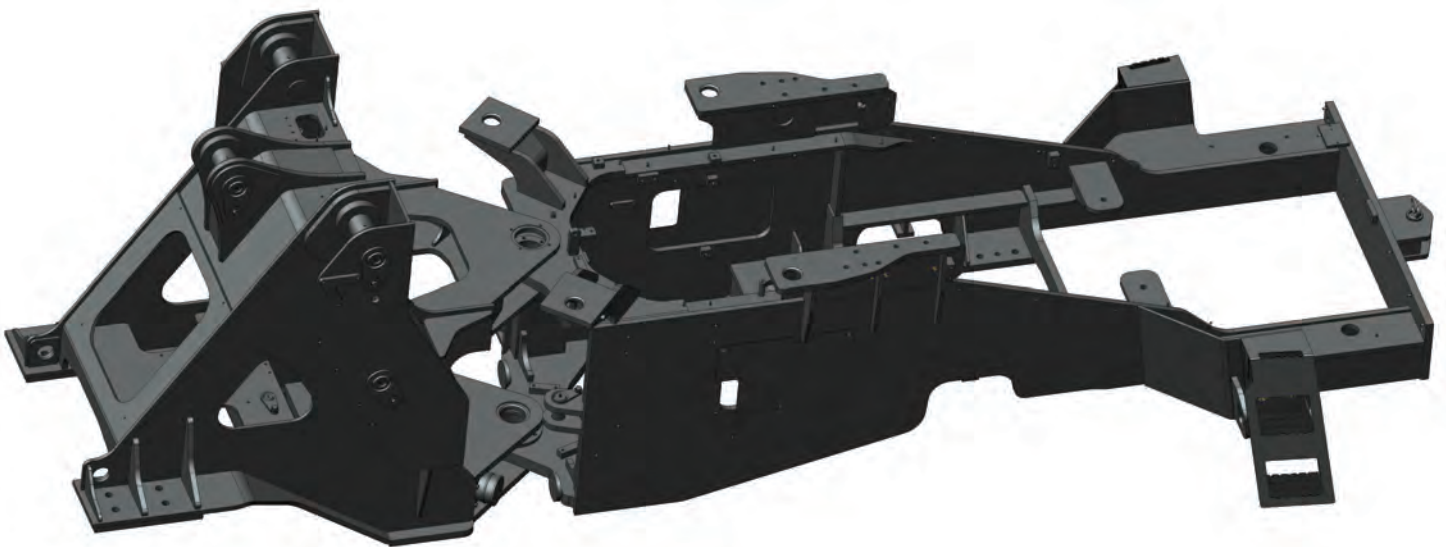
LiuGong's new-generation, hydraulic system ensures the mechanical, electrical and hydraulic systems work in perfect harmony. This technology ensures a perfect

match of hydraulic flow to the job at hand and power is only supplied when needed, ensuring optimal efficiency.



# TOUGH & RELIABLE STRUCTURES

At every stage of design, LiuGong is committed to the principles of **reliability and durability**. This is evident in the 856H, making this new wheel loader a **smart choice** for those looking for low cost of ownership and peace of mind.



## ENHANCED STRUCTURES

The chassis frame is the wheel loader's backbone. Particular care has been given to the design of this crucial structural component. Advanced analysis tools, including dynamics and durability simulations have been utilized to ensure the machine is able to absorb all the force, while preventing torsion and twisting and protecting the driveline.

## Z-BAR LINKAGE REINVENTED

The newly designed Z-bar takes the full force of the payload and needs to deliver not only strength but clear visibility to the worksite. On the 856H, the Z-bar linkage has been redesigned for improved distribution of stress loads and key components such as hinge pins and lift arm mounting plates have been cast from materials specially heat treated, for increased strength.







---

World-class components deliver maximum reliability and durability in every machine.

---

### **PROVEN ENGINE**

The engine is the heart of the wheel loader and essential to performance over the life of the machine. The Cummins QSB6.7 engine is well known in the industry having worked millions of hours of operation across hundreds of thousands of worksites. When designed into a LiuGong machine, this engine endures 30,000 hours of rigorous LiuGong field testing to ensure the proven quality and reliability of every machine.

### **LOW MAINTENANCE BRAKE SYSTEM**

In-axle hydraulic brakes isolate the components from the external environment, ensuring a long working life and easy maintenance. The new lubrication system is designed to deliver better brake performance and dramatically reduce tire wear.

# AN ENVIRONMENT DESIGNED FOR WORK

Ergonomically designed controls, a roomy cab, clear **visibility** and convenient features all contribute to operator comfort and overall **productivity** on the jobsite.

## SEE BETTER, WORK BETTER

The new 856H is designed to offer maximum visibility for safe and efficient operation. A panoramic view is made possible by the cabs curved front glass

and well positioned lift arms. The operator has a clear line of sight to the bucket edge at ground level and exceptional views

of the machine corners. The 856H also comes with an optional rear-view camera to help keep an extra eye on the jobsite.





## WORK IN COMFORT

The spacious cab of the 856H maximizes operating space and provides a comfortable work area for the operator.

The vertically and horizontally adjustable air suspension seat ensures the operator can work long days in comfort and with less fatigue.

Sound and vibration levels inside the cab are a low 69Db (A) thanks to the high quality sealing, quieter electrical system and efficient cooling compartment.

## PRECISE COMMAND & CONTROL

For easy operation, a choice between joystick and finger control levers give the operator simultaneous and precise control. Forward and reverse shifting and kick-down functions are ergonomically positioned for easy operator use, improving productivity and reducing operator fatigue.

## LARGE LCD DISPLAY

The color LCD monitor displays all the required information about vital

machine functions, including hydraulic oil temperature, hydraulic pressure, service interval alerts and more.

## FRESH AIR ALWAYS

The new 856H cab is designed with balanced air recycling ventilation to achieve positive pressure and continuous fresh air inside the cab. The air conditioning system is equipped with eight all around vents to keep the cab comfortable no matter the outside temperature. Easy-to-replace air filters eliminate dust and prevents particles from entering the cab.





# SERVICING MADE SIMPLE

The 856H boasts a number of **innovations** to make servicing and maintenance faster, easier, and more cost-effective, leaving you time to **focus on your business**.

## EASY ACCESS

The electrically actuated, wide-opening fiberglass hood of the new 856H gives fast access to the engine and its easy-to-reach service points.

The cab filter has been relocated to the left side of the cab so it can be easily accessed for fast ground level servicing.

The electric control box is situated behind the operator's seat and centralizes all connecting lines allowing for quick reach and easy assessment.

The hydraulic oil gauge is clearly visible from ground level, making visual checks easy and efficient.



## AUTOMATIC SYSTEMS

An automatic greasing system maximizes uptime, and the use of the operator-selectable, reversible fan function allows for effective self-cleaning, extending the manual radiator cooling intervals.

## SAFE MAINTENANCE

Well-positioned anti-slip tapes and support railings provide superior grip to ensure improved safety for service staff during routine maintenance.







# PART OF YOUR PERFORMANCE



We know that **confidence** in your machine and those who support it is essential. So at Liugong, we make sure we can always get what you need without delay, via our eight global parts depots, and the support of our network of local dealers across 130 countries worldwide.

No matter where you are in the world, we can ensure fast and efficient parts support to keep you going.





Anywhere, and at any time.  
That's more than our goal.  
That's our pledge.



### GENUINE PARTS

Using genuine LiuGong parts is the key to keeping your running costs low and your machine working in top order. Built for purpose and engineered to work perfectly together, our parts and components are rigorously tested to ensure they can stand up to the demands of all types of work environments.

LiuGong engineering sets high standards and all parts are rigorously tested to ensure they can meet the rigid quality specifications required for long lasting performance.

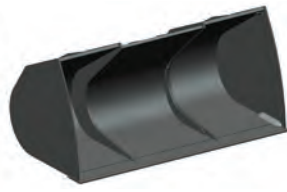
## GET MORE FROM YOUR MACHINE

The new 856H is designed to work with a wide range of attachments to maximize the versatility of your machine. Simple and fast changeover of attachments are made possible thanks to the quick coupler and optimized Z-bar design.

The machine can be equipped with a range of general purpose, rock, grapple and light material buckets to 5.6m<sup>3</sup>. Other specialized attachments and pallet forks give even more choice.



**GENERAL PURPOSE**



**LIGHT MATERIAL**



**ROCK**



**SIDE-DUMP BUCKET**



**GRASS GRAPPLE**



**GRAPPLE WITH ALIGNED TEETH**



**GRAPPLE WITH CROSSED TEETH**



**FORKS**

# MAXIMIZE YOUR RETURN ON INVESTMENT

## DEPENDABLE POWER

Unmatched performance is driven by the Cummins QSB6.7 Tier 4 Final Engine - maximizing torque output and delivering more power and breakout force at lower engine speeds.

## TRANSMISSION

The new 5-speed ZF powershift transmission, including torque converter, provides maximum transfer of power to improve performance and fuel efficiency.

## ADVANCED HYDRAULIC SYSTEM

LiuGong's new-generation advanced hydraulic system organizes the mechanical, electrical and hydraulic systems to work in perfect harmony. Power is supplied only as needed, achieving optimum efficiency.



## AUTO-IDLE SPEED FUNCTION

Optimizing and controlling engine speed is key to reducing fuel consumption. The Auto-Idle Speed function provides optimal control in allocating the required RPM for the work required.

## CONTROLS

Kick-down and forward/reverse button are conveniently located on the loader joystick for efficient operator use, reducing cycle times and improving productivity.



---

## Z-BAR LINKAGE REINVENTED

Optimized Z-Bar geometry positions the bucket closer to the tires, achieving high bucket breakout forces and stable payload transport with minimal spillage.

---

## AXLES

The limited-slip differential axles automatically deliver power to the wheels, increasing traction for optimum performance even in the toughest terrain with the toughest loads.

---

## VERSATILITY

The quick coupler ensures easy and efficient switching between attachments so you get the most productivity from your machine.

---

## ALL ROUND VISIBILITY

The cabs curved front glass design and well positioned loader lift arms provide a broad visibility and easy line of sight to the bucket edge at ground level.



---

## AFTER SALES SUPPORT

With over 2,650 outlets, you can feel confident that our dealers and regional offices will be there to support you with training, service and maintenance and expert advice for the life of your machine.

---

## PARTS

Our extensive network of support is always there when you need it, from genuine LiuGong parts to expert service, to maximize your business profitability.





# WHERE YOU NEED US WHEN YOU NEED US

LiuGong is committed to providing **reliable** and **tough** equipment combined with dependable service to customers **across the globe**.



We offer local support through our extensive dealer network in more than 130 countries. Our dealers and customers are supported by 10 regional subsidiaries and 8 global parts centers, all offering expert training, parts and service support.

## PROFESSIONAL ADVICE

No matter the job, we can help you choose the right machine, with the right specifications, options and attachments for your business. We are committed to ensure maximum uptime and lowest cost of ownership to ensure you get good profitable return from your equipment.

## SERVICE AGREEMENTS

At LiuGong, we offer service agreements to support your business needs and help you take control of all your costs. Talk to us today.





# SAFETY WITHOUT COMPROMISE

LiuGong is **committed to your safety** on the jobsite and the 856H wheel loader comes equipped with all the necessary safety features to offer you **peace of mind**.



---

Keep safe when reversing with a rear view camera that keeps an extra eye on the jobsite.

---





## FOPS/ROPS CAB

The 856H comes standard with a Rollover Protection System (ROPS) and Falling Object Protection System (FOPS) for extra peace of mind.

## ALL-AROUND VISIBILITY

In addition to the new curved front glass cab, all-around visibility is supported by a rear view camera to help you keep an extra eye on the jobsite. Choice of LED working lights provide even better visibility for low light or night time work.

## SAFE ENTRY

The welded 4-bar steps are non-slip and spaced far enough apart to ensure debris doesn't collect on the steps, but close enough to ensure safe climbing. Well positioned grab handles and platforms make cab access easy and safe.



## OPERATOR FRIENDLY

A strong cab seal blocks the ingress of dust and minimizes sound and vibration levels to ensure a comfortable, safe and focused work environment.



# SPECIFICATIONS

## ENGINE

### Description

Cummins, 6.7 liter, 6-cylinder straight turbocharged diesel engine with Common Rail fuel injection system and Cooled Exhaust Gas Recirculation (EGR).

Cummins Variable Geometry Turbocharger (VGT) improves engine response at both low and high speed RPM.

Hibernate – saves fuel, idle time is 10 sec and speed low at 700 rpm.

Warm-up – increases idle, in low temperature environment, idle speed at 1,000 rpm and idle time is 600 seconds to warm-up.

Air cleaning: Cummins direct flow air filter.

Cooling system: Air-to-air intercooler, hydraulic motor drive and temperature controlled fan.

Emission regulation	EPA Tier4F / EU Stage 4
Make	Cummins
Model	QSB6.7
Gross power	225 hp (168 kW) @ 2,200 rpm
Net power	215 hp (160 kW) @ 2,200 rpm
Peak torque	950 Nm
Displacement	6.7 L
Number of cylinders	6
Aspiration	Turbocharged & Air-to-air intercooled

## HYDRAULIC SYSTEM

### Description

System supply: Two load-sensing axial piston pumps with variable displacement. The steering function always has priority.

Valves: Double-acting 3-spool valve.

The main valve is controlled by a 3-spool pilot valve.

Lift function: The valve has four positions; lift, hold, lower, and float. Inductive/magnetic automatic boom kick-out can be switched on and off and is adjustable to two positions; bucket at ground level and maximum reach full lifting height.

Tilt function: The valve has three functions; rollback, hold and dump.

Cylinders: Double-acting cylinders for all functions.

Filter: Full-flow filtration through 12 micron (absolute) filter cartridge.

Main Pump Type	Piston
Main relief pressure	22 Mpa
Raise	5.7 s
Dump time	1.3 s
Float down time	3 s
Fastest total cycle time	10 s
Controls	Joystick or 3 levers

## TRANSMISSION STANDARD

### Description

ZF countershaft transmission with torque converter.

Integrated pilot single joystick with Forward & Reverse and Kick-down button.

Electro proportional valve for continuous power during gear shifting.

Gearshifting system: ZF Automatic Power Shift with auto modes for better material loading and transportation.

Transmission type	Countershaft, power shift
Torque converter	Single stage, three elements
Maximum travel speed, fwd	38.1 km/h
Maximum travel speed, rev	23.9 km/h
Number of speed, fwd	4
Number of speed, rev	3

## TRANSMISSION OPTIONAL

### Description

ZF countershaft transmission with torque converter.

Integrated pilot single joystick with Forward & Reverse and Kick-down button.

Electro proportional valve for continuous power during gear shifting.

Gearshifting system: ZF Automatic Power Shift with auto modes for better material loading and transportation.

Torque converter with a lock-up function which enables direct drive already at low speeds.

Transmission type	Countershaft, power shift
Torque converter	Single stage, three elements
Maximum travel speed, fwd	38.1 km/h
Maximum travel speed, rev	23.9 km/h
Number of speed, fwd	5
Number of speed, rev	3



## AXLES

Differential front type	Limited slip
Differential rear type	Limited slip
Axle oscillation	±12°

## BRAKES

### Description

Two independent brake circuits, disks out of rim, accurate control with the advanced main valve & piston pump

Service brake type	Wet disc brake
Service brake actuation	Hydraulic
Parking brake type	Manual electronic control
Parking brake actuation	Hydraulic

## STEERING

### Description

Steering system: Load-sensing hydraulic articulated steering.  
 System supply: The steering system has priority feed from a load-sensing axial piston pump with variable displacement.  
 Steering cylinders: Two double-acting cylinders.

Steering configuration	Articulated
Steering relief pressure	19 Mpa
Steering cylinders	2
Cylinder bore	90 mm
Rod diameter	50 mm
Stroke	465 mm
Working pressure	22 MPa
Maximum flow	140 l/min
Maximum articulation	±38°
Smallest turn (over tire)	6205 mm



# SPECIFICATIONS

## ELECTRICAL SYSTEM

### Description

Central warning system is a conronic electrical system with central warning light and buzzer for following functions: Serious engine fault, Low steering system pressure, Interruption in communication (computer failure), Low engine oil pressure, High engine oil temperature, High charge-air temperature, Low coolant level, High coolant temperature, Low transmission oil pressure, High transmission oil temperature, Low brake pressure, Engaged parking brake, Brake charging failure, High hydraulic oil temperature

Voltage	24 V
Batteries	2 X 12 V
Battery capacity	2 x 120 Ah
Cold cranking capacity, approx	850 A
Reserve capacity	230 min
Alternator rating	1960 W/70 A
Starter motor output	4.8 kW (6.4)

## CAB

### Description

All important information is centrally located in the central instrument panel and operator's field of vision.

Large curved front glass, rear view camera and mirrors ensure great visibility.

Adjustable steering column, air suspension seat and armrest box, and climate control with all-around air outlets providing you the best working environment.

Pressurized cab with lower sound inside.

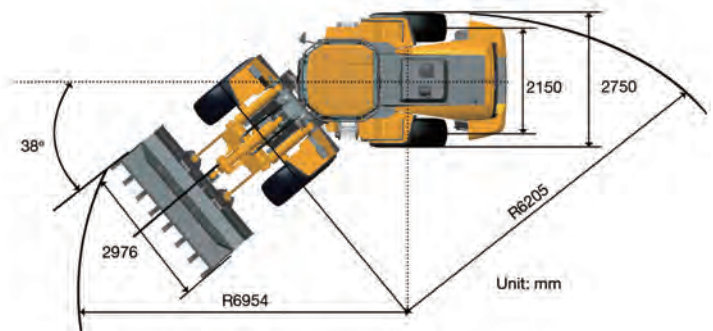
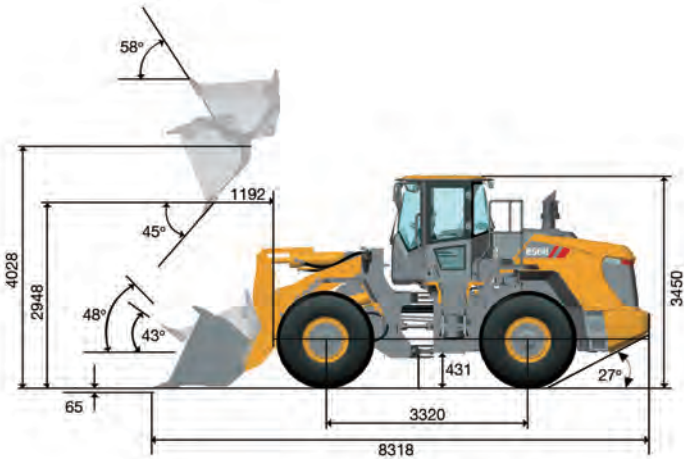
ROPS Cab (ISO3471), Choice of FOPS (ISO 3449)

## SOUND & ENVIRONMENT

Sound level in cab - Travel mode (ISO 6396-2008/EN ISO 3744-1995)	69 dB(A)
Sound level in cab - Stationary Work cycle mode (ISO 6396-2008/EN ISO 3744-1995)	70 dB(A)
External sound level - Travel mode (ISO 6395-2008)	105 dB(A)
External sound level - Stationary Work cycle mode (ISO 6395-2008)	106 dB(A)
Ventilation	9.2 m³
Heating capacity	5.8 KW
Air conditioning capacity	6 KW

## DIMENSIONS

Length with Bucket Down	8,318 mm
Width Over Tires	2,750 mm
Wheelbase	3,320 mm
Wheel Tread	2,150 mm
Ground Clearance	431 mm
Turn Angle, Either Side	38°
Rear Angle of Departure	27°
Turning Radius, Outside of Tire	6,205 mm
Turning Radius, Center of Tire	5,896 mm
Turning Radius, Bucket Carry	6,954 mm





#### LOADER ARM PERFORMANCE WITH ATTACHMENT

Tipping load - straight	12,700 kg
Tipping load - full turn	10,900 kg
Bucket breakout force	180 kN
Maximum dump angle at full height	45°
Dump clearance at full height discharge	2,948 mm
Dump reach at full height discharge	1,192 mm
Maximum hinge pin height	4,028 mm
Maximum digging depth, bucket level	65 mm
Bucket rollback at ground level	43°
Bucket rollback at carry	48°
Bucket rollback at maximum height	58°

#### SERVICE REFILL CAPACITIES

Fuel tank	300 L
Engine oil	20 L
Cooling system	42 L
Hydraulic system	236 L
Transmission and torque converter	45 L
Axles, each	44 L



# SPECIFICATIONS



## TIRES

Choosing the right tires for your machine will become a key competitive advantage to achieve outstanding performance. Through close engineering and development cooperation with renowned and carefully selected suppliers, LiuGong can offer a full range of tires specially tailored for wheel loader.

Code	Application	Patterns	Size	PR / *	Tube Type	Width, mm	Overall Diameter, mm	Tread Depth, mm	Load Capacity, 50 km/h / 10 km/h, kg
L2	<ul style="list-style-type: none"> <li>where good traction is needed, e.g. at grading work</li> <li>in soft and muddy operation where sharp stones don't occur</li> <li>in all load/carry operations</li> </ul>		23.5 - 25	12	TL	595	1615	29.5	5300/8000
			23.5 - 25	16	TT	595	1615	29.5	6150/9500
L3	<ul style="list-style-type: none"> <li>in sand operation</li> <li>in all kinds of load/carry operation</li> <li>The L3-tread is not as open as L2 and has consequently less self-cleansing compared with an L2 tire</li> </ul>		23.5 - 25	16	TL	595	1615	35	6150/95000
			23.5 - 25	20	TT	595	1615	35	7300/10900
			23.5 - 25	24	TT	595	1615	35	8000/13200
			23.5 R 25	*	TL	600	1617	36	7100/12150
			23.5 R 25	**	TL	600	1617	36	9250/14500
L5	<ul style="list-style-type: none"> <li>in very aggressive material where good protection against cut damage is demanded, e.g. in quarries or mines</li> </ul>		23.5 R 25	*	TL	612	1662	78	12150(10km/h)
			23.5 R 25	**	TL	775	1905	78	14500(10km/h)

## ATTACHMENTS

LiuGong attachments with pin-on or quick-coupler ensure high quality as the machine. Integrated design of the whole system makes a perfect match to achieve superior productivity.

Type	Capacity (m³)	Width (mm)	Height (mm)	Digging Depth (mm)	Dump Clearance (mm)	Dump Reach (mm)	Description	 	
General Purpose	2.6	2,900	1,347	35	3,192	1,035	Anti-Wear Blade Welded teeth	 	
	3.0	2,900	1,303	35	3,100	1,126	Anti-Wear Blade Bolt-on Cutting Edge and Bolt-on Teeth		
	3.3	2,900	1,314	35	2,948	1,192	Bolt-on Cutting Edge, Bolt-on Teeth Bolt-on Cutting Edge and Bolt-on Teeth	 	
	3.5	2,900	1,382	35	2,995	1,233	Bolt-on Cutting Edge, Bolt-on Teeth		
Light Material	4.2	3,168	1,429	35	2,921	1,263	Bolt-on Cutting Edge	 	
	4.7	3,168	1,445	35	2,815	1,364	Bolt-on Cutting Edge		
	5.6	3,150	1,561	35	2,907	1,321	Bolt-on Cutting Edge Bolt-on Cutting Edge and Welded Teeth		
Rock	2.7	2,866	1,390	45	3,037	1,122	V-shape Anti-Wear Blade		
Grapple	Φ1,000	2,640	1,732	62	2,610	1,678	Aligned Teeth		
	Φ350	2,600	1,520	62	2,862	1,485	Crossed Teeth		



# STANDARD EQUIPMENT

## ENGINE

- Cummins diesel engine, turbocharged, 6 Cylinder, common rail, air-to-air intercooled
- Reversible fan
- Exhaust emission control
- DC air filter, fuel filter
- Intelligent Power Control (IPC)

## TRANSMISSION

- ZF 4F/3R power shift transmission
- Kick-down function
- Forward & Reverse Function
- Transmission oil level sight gauge
- Remote installing oil filter, oil stick
- Remote pressure taps for check
- Auto shifting mode by speed

## AXLE

- ZF wet axle with limited slip differentials
- Wet discs service brake system
- Parking brake service as secondary
- Interlock between parking brake and gearshifting

## HYDRAULIC SYSTEM

- Two piston pumps with variable displacement
- Load-sensing according to demand
- Third port for auxiliary function
- Single joystick control
- Ride control system
- Kick-down, automatic
- Bucket positioner, automatic
- Pressure check points
- Boom lowering without engine power

## STEERING SYSTEM

- Load sensing system with technology of flow amplification and steering priority
- Emergency steering system

## TIRE & RIM

- Radial tire
- Wide fenders

## CHASSIS FRAME

- Spacious central articulation arrangement with conic bearing
- Articulation locking bar
- Tow hitch
- Rubber stop cushions

## LINKAGE & ATTACHMENTS

- Z-bar linkage
- Quick coupler
- Anti-wear blade

## ELECTRIC SYSTEM

- Two front lights with high/low beam
- Four front headlights on top of cab
- Four rear headlights on top of cab
- Turn signals
- Dual batteries
- 24V power outlet
- Front and rear windshield wiper
- Convenience compartment
- Reverse alarm
- Radio/player with USB port
- Reversing warning light, automatic

## GAUGE GROUP

- Engine coolant temperature
- Transmission oil temperature
- Fuel level & hour meter
- Voltage
- Brake oil pressure

## INDICATOR GROUP

- Air inlet heater
- Battery charging
- Parking brake
- Machine emergency stop
- Power cut-off
- Engine servicing
- Turning lights
- High beam of front light

## CAB

- Certified FOPS/ROPS cab
- Air suspension seat, armrest
- Adjustable steering column (up & down, forward & backward)
- Large curved front glass
- Rubber cab mounts
- Air filter
- One interior & dual exterior rear-view mirrors
- Rear-view camera display
- Air Condition
- Cooler compartment
- Cup holder
- Rear windshield defroster
- Sun visor - front & rear
- Fire extinguisher

# OPTIONAL EQUIPMENT

## ENGINE

- Cold start aid
- Multistage filter, oil bath filter

## TRANSMISSION

- ZF 5F/3R Transmission with lock-up

## AXLE

- ZF wet axle without limited slip differentials

## HYDRAULIC SYSTEM

- Fingertip levers control
- Electrical proportion valve

## TIRE & RIM

- L5 Pattern Tires
- Tubeless tire
- Fenders
- Tire protective chain

## CAB

- Electrical heating air suspension seat
- Electric heater for rear mirror

## ELECTRIC SYSTEM

- Electrical load weigher
- LED headlights on top of cab

## LINKAGE & ATTACHMENTS

- Additional counterweight
- High/extra-high arm
- Bolt-on wear-resistant blade and teeth
- Rock bucket
- Grapple with aligned or crossed teeth
- Fork
- Snow blade



**LG -PB-856H-0616-ENG**



**Guangxi LiuGong Machinery Co., Ltd.**  
No. 1 Liutai Road, Liuzhou, Guangxi 545007, PR China  
T: +86 772 388 6124 E: overseas@liugong.com  
[www.liugong.com](http://www.liugong.com)

Like and follow us:



The LiuGong series of logos herein, including but not limited to word marks, device marks, letter of alphabet marks and combination marks, as the registered trademarks of Guangxi LiuGong Group Co., Ltd. are used by Guangxi LiuGong Machinery Co., Ltd. with legal permission, and shall not be used without permission. Specifications and designs are subject to change without notice. Illustrations and pictures may include optional equipment and may not include all standard equipment. Equipment and options varies by regional availability.